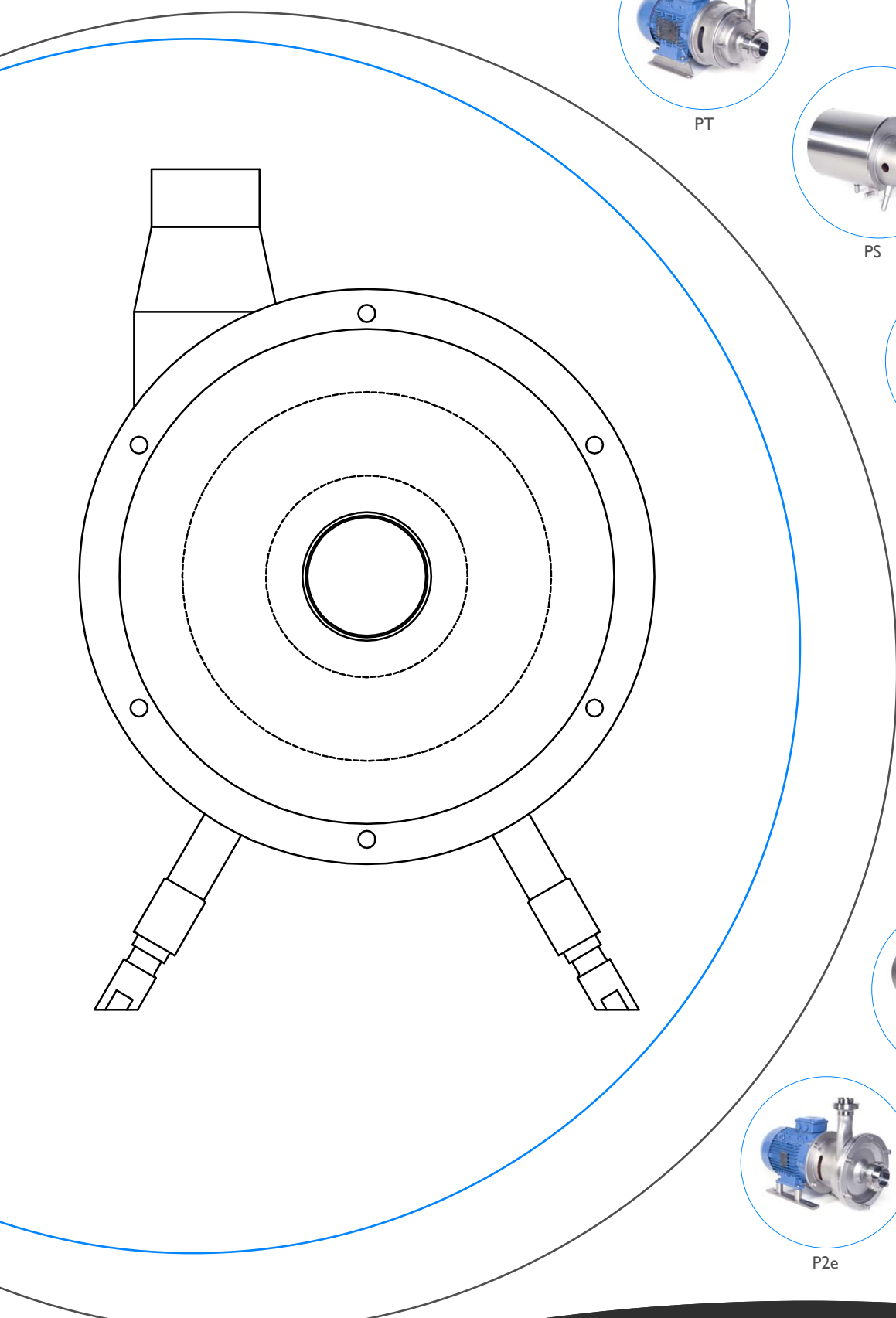


Guth Centrifugal Pumps



PT



PS



PS e



PI



PI e



P2



P2 e

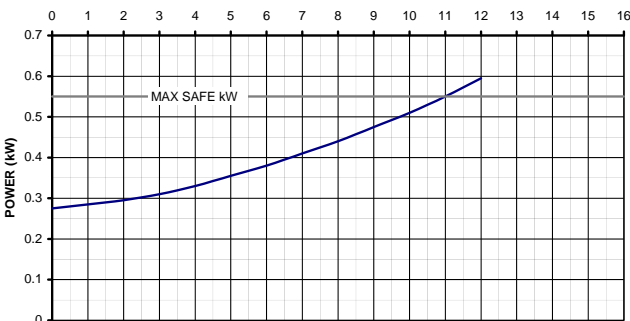
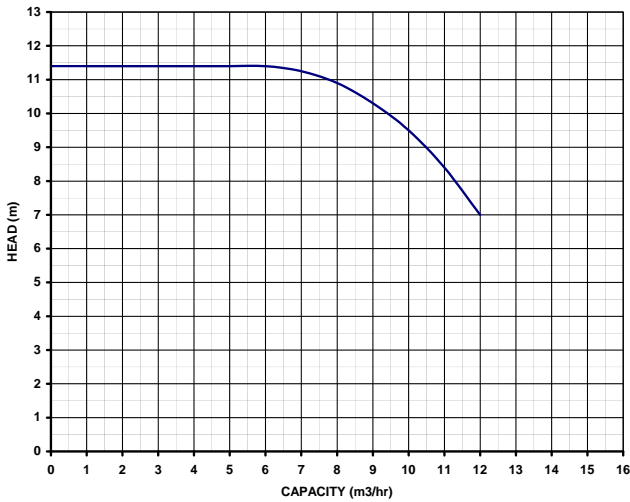


Model PT Centrifugal Pump

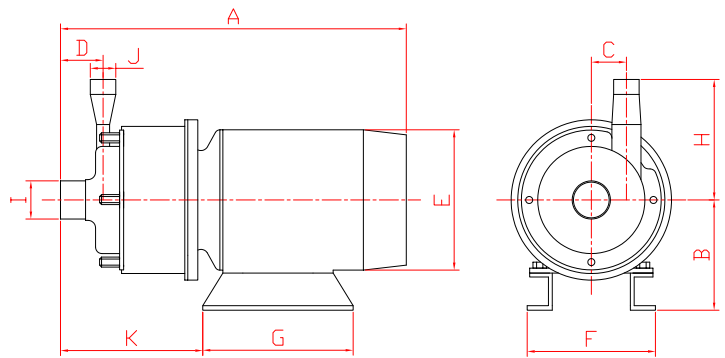
- Inexpensive, Durable, Small transfer pump
- Manufactured by Guth South-Africa
- CIP-able
- 2 Options available
 - 220v
 - 380v
- AISI 316 Stainless steel (wetted parts)
- Single mechanical seal
 - Carbon vs Ceramic
- Elastomers: Viton
- Open impeller design for particulate liquids
- Pumps are plain ended suitable for all standard food quality connections
- Every pump is tested for flow, pressure and motor loading- Full pump test certificate supplied
- Manual on Installation, Operation & Maintenance plus spares list supplied



MOTOR 0.55 kW, 2770 RPM, 50 Hz IMPELLER DIA 92mm
 SUCTION 1.5" DAIRY TUBE
 DELIVERY 1" DAIRY TUBE



PLEASE NOTE: * TEST DATA REFERS TO WATER AT 20°C
 * REMEMBER TO ALLOW A SAFETY MARGIN



Pump PT											
Sizes	A	B	C	D	E	F	G	H	I	J	K
0.55kW	385	108	30	36	140	130	150	125	38	25	140

Dimensions may change without notice



guth
SOUTH AFRICA

Model PS/PSe/PI/PIe/P2/P2e

- Standard and economy versions for all models
PS & PSe (2 motor sizes) up to 14m³/h
P1 & P1e (5 motor sizes) up to 44m³/h
P2 & P2e (2 motor sizes) up to 65m³/h
 - AISI 316 stainless steel (wetted parts)
AISI 304 stainless steel (motor cover, legs)
 - Common interchangeable seal for these 3 models, and choice of faces & elastomers
 - Seal faces:
 - Stainless steel vs Carbon (standard)
 - Silicone carbide vs Silicone carbide
 - Tungsten carbide vs Tungsten Carbide
 - Elastomers: EPDM or Viton
 - Quench flush arrangement available
 - Open impeller design for particulate liquids
 - Pumps are plain ended, suitable for all standard food quality connections
 - Every pump is tested for flow, pressure and motor loading- full pump test certificate supplied
 - Manual on Installation, Operation & Maintenance plus Spares list with each pump
-
- All Guth Pumps manufactured by Guth South-Africa
 - Robust
 - Economical
 - Simple to Operate
 - Easy to maintain
 - CIP-able



PS



PSe



PI



PIe



P2



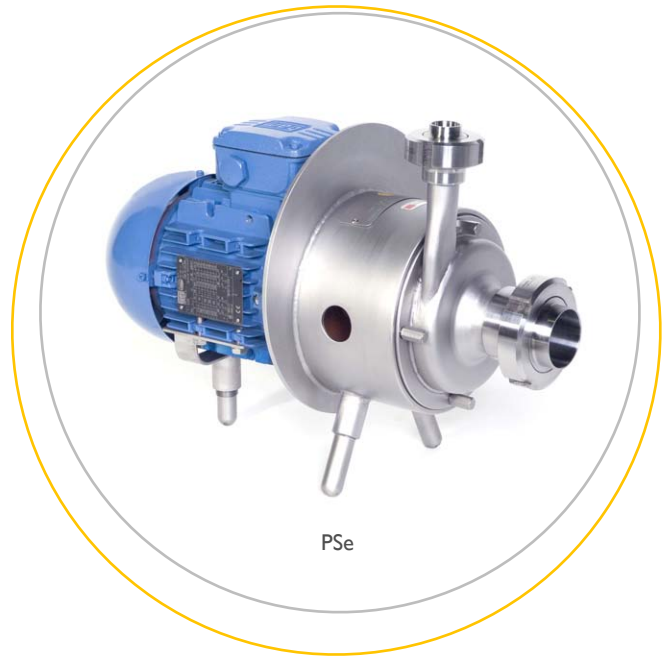
P2e



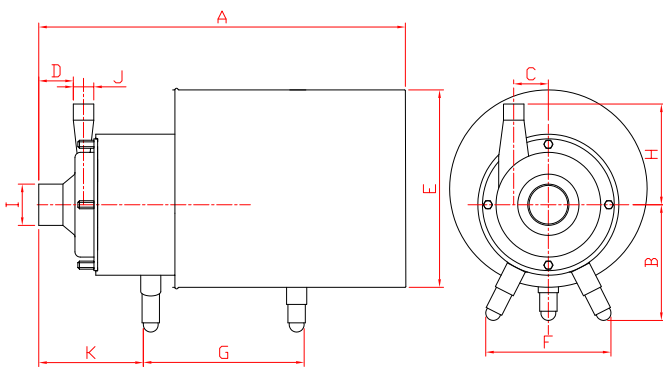
Model PS & PSe



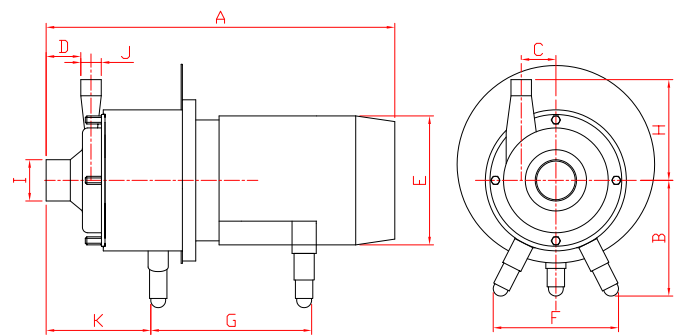
PS



PSe



PS



PS e

Pump PS & PS-E

Sizes	A	B	C	D	E	F	G	H	I	J	K
0.75kW	450	160	45	55	250	180	205	135	51	25	130
0.75kW(e)	410	160	45	55	158	180	205	135	51	25	130
1.1kW	450	160	45	55	250	180	205	135	51	25	130
1.1kW(e)	410	160	45	55	158	180	205	135	51	25	130

Dimensions may change without notice

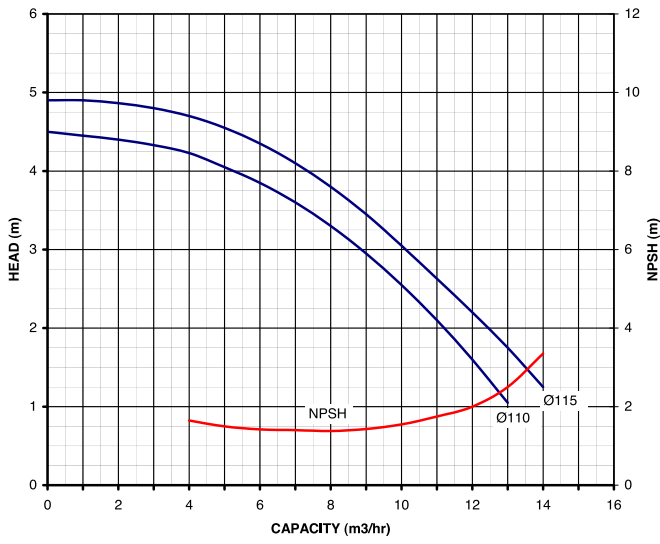


guth
SOUTH AFRICA

PS Curves

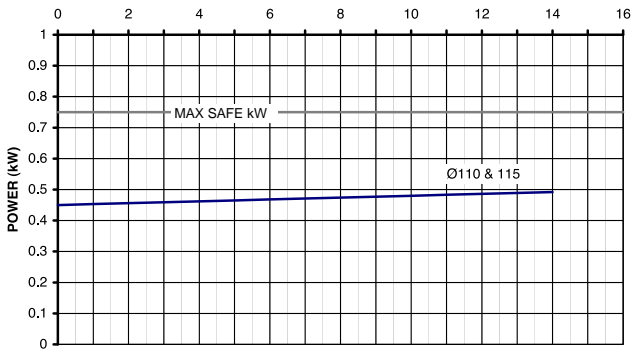
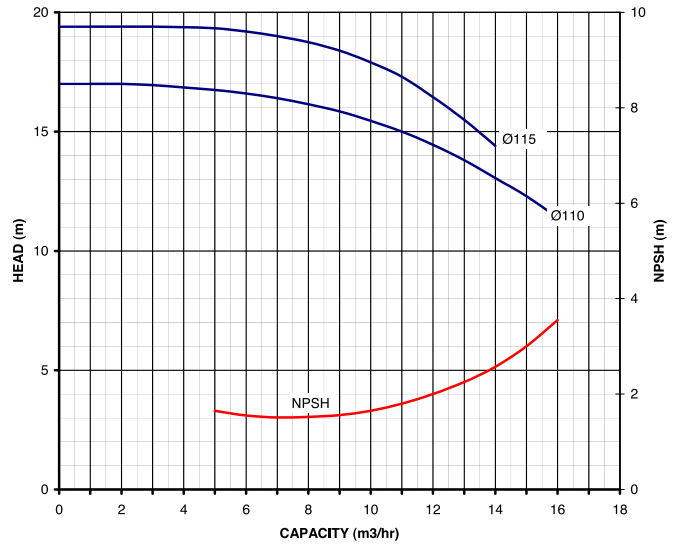
MOTOR 0.75 kW, 1410 RPM, 50 Hz
 SUCTION 2" DAIRY TUBE
 DELIVERY 1" DAIRY TUBE

IMPELLER DIA MAX.115mm
 MIN. 110mm

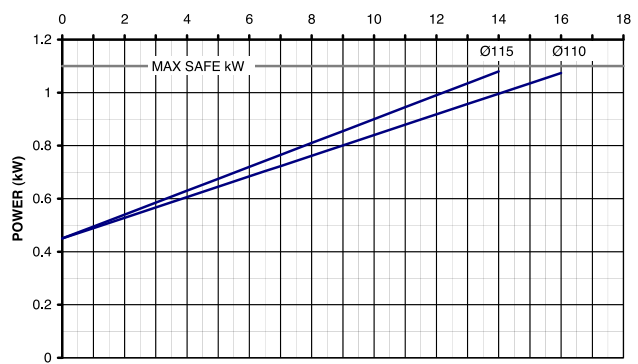


MOTOR 1.1 kW, 2850 RPM, 50 Hz
 SUCTION 2" DAIRY TUBE
 DELIVERY 1" DAIRY TUBE

IMPELLER DIA MAX.115mm
 MIN. 110mm



PLEASE NOTE: * TEST DATA REFERS TO WATER AT 20°C
 * REMEMBER TO ALLOW A SAFETY MARGIN



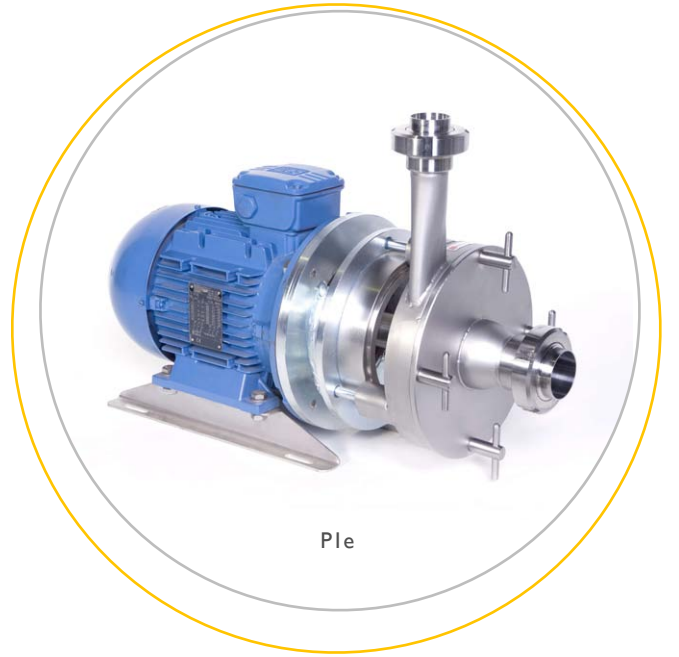
PLEASE NOTE: * TEST DATA REFERS TO WATER AT 20°C
 * REMEMBER TO ALLOW A SAFETY MARGIN



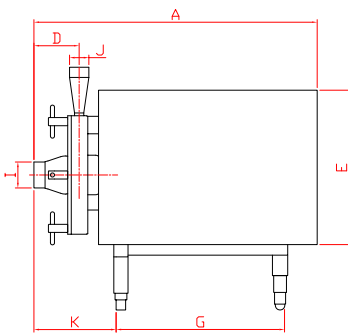
Model P1 & P1e



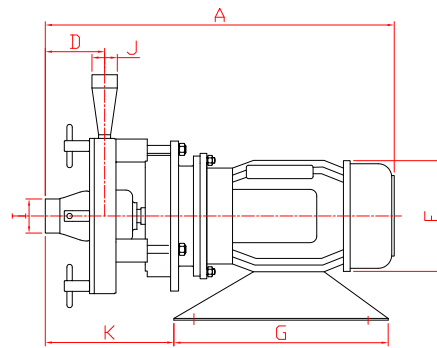
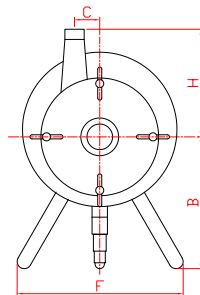
P1



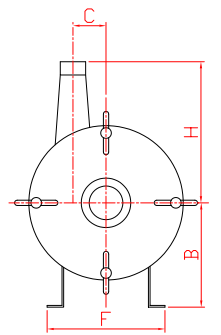
P1e



P1



P1e



Pump P1 & P1-E

Sizes	A	B	C	D	E	F	G	H	I	J	K
1.1kW	610	270	75	95	300	325	335	230	51	38	160
1.1kW(e)	510	150	75	95	179	190	350	230	51	38	150
2.2kW	610	270	75	95	300	325	335	230	51	38	160
2.2kW(e)	515	150	75	95	170	190	350	230	51	38	150
3.0kW	610	270	75	95	300	325	335	230	51	38	160
3.0kW(e)	560	150	75	95	200	210	350	230	51	38	150
4.0kW	610	270	75	95	330	325	335	230	51	38	160
4.0kW(e)	580	150	75	95	222	240	350	230	51	38	150
5.5kW	710	270	75	95	375	345	350	230	51	38	205

Dimensions may change without notice

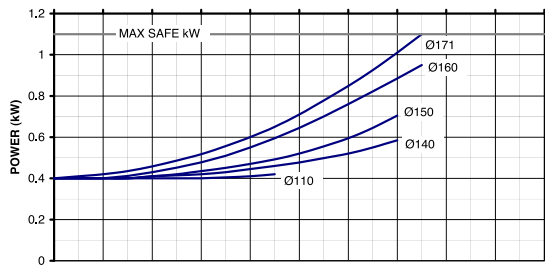
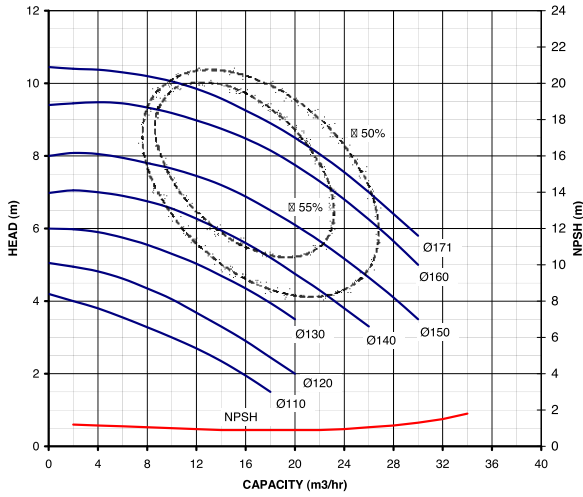


guth
SOUTH AFRICA

PI Curves

MOTOR 1.1 kW, 1410 RPM, 50 Hz
SUCTION 2" DAIRY TUBE
DELIVERY 1.5" DAIRY TUBE

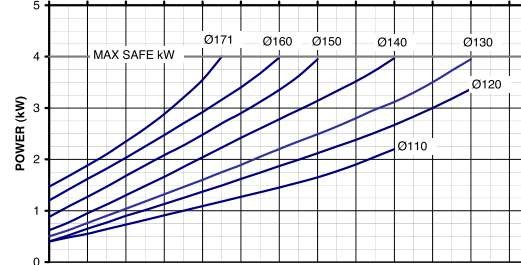
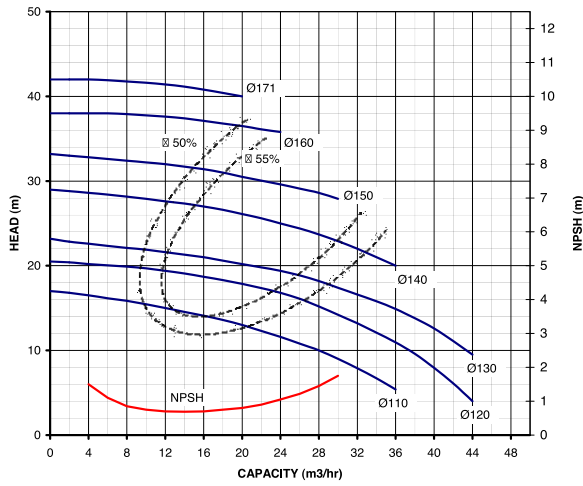
IMPELLER DIA MAX.171mm
MIN. 110mm



PLEASE NOTE: * TEST DATA REFERS TO WATER AT 20°C
* REMEMBER TO ALLOW A SAFETY MARGIN

MOTOR 2.2, 3.0, 4.0 kW, 2870 RPM, 50 Hz
SUCTION 2" DAIRY TUBE
DELIVERY 1.5" DAIRY TUBE

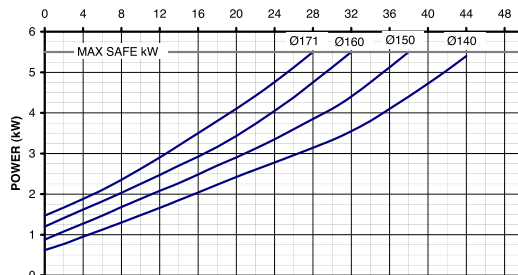
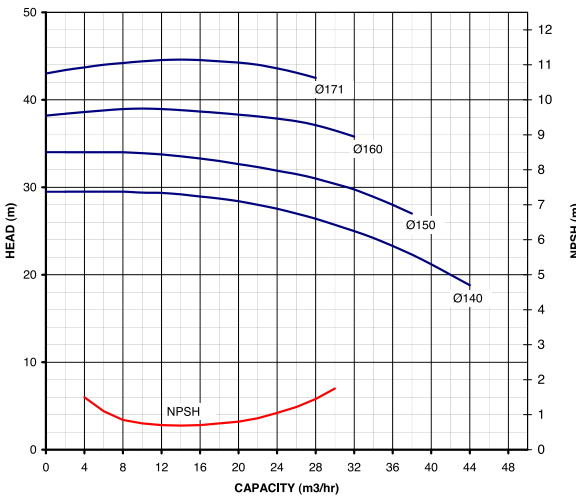
IMPELLER DIA MAX.171mm
MIN. 110mm



PLEASE NOTE: * TEST DATA REFERS TO WATER AT 20°C
* REMEMBER TO ALLOW A SAFETY MARGIN

MOTOR 5.5 kW, 2910 RPM, 50 Hz
SUCTION 2" DAIRY TUBE
DELIVERY 1.5" DAIRY TUBE

IMPELLER DIA MAX.171mm
MIN. 140mm



PLEASE NOTE: * TEST DATA REFERS TO WATER AT 20°C
* REMEMBER TO ALLOW A SAFETY MARGIN



guth
SOUTH AFRICA

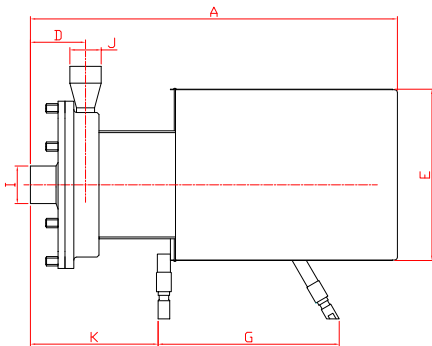
Model P2 & P2e



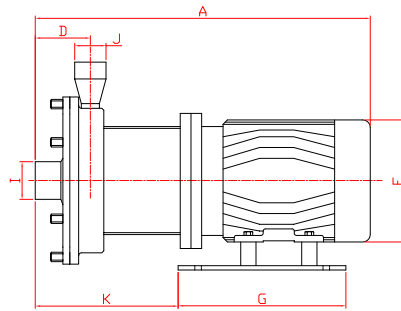
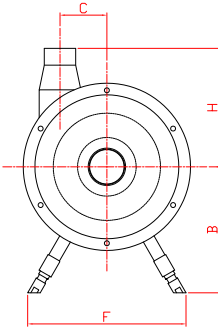
P2



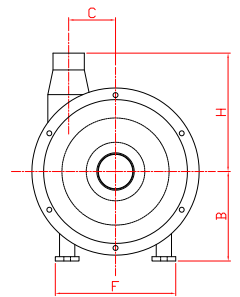
P2e



P2



P2 e



Pump P2 & P2-E											
Sizes	A	B	C	D	E	F	G	H	I	J	K
5.5kW	735	270	100	100	375	345	350	270	76	63	220
5.5kW(e)	680	200	100	100	270	266	350	270	76	63	220
7.5kW	735	270	100	100	375	345	350	270	76	63	220
7.5kW(e)	680	200	100	100	270	266	350	270	76	63	220

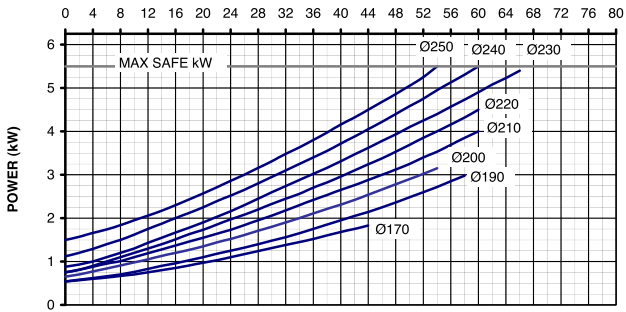
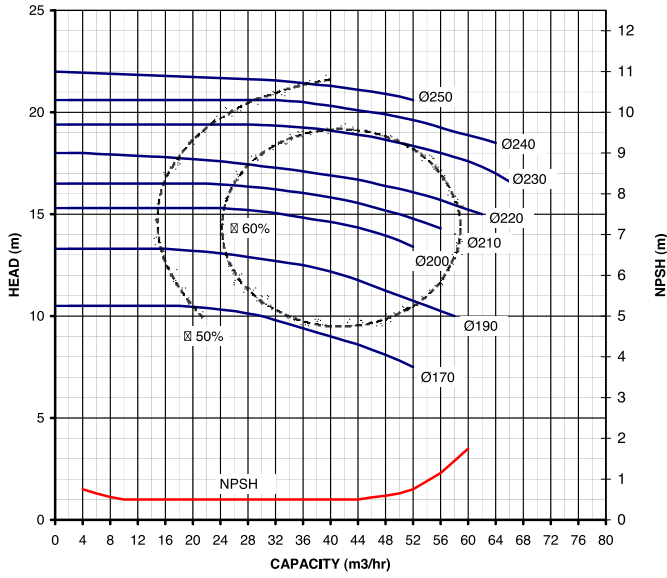
Dimensions may change without notice



P2 Curves

MOTOR 5.5 kW, 1450 RPM, 50 Hz
 SUCTION 3" DAIRY TUBE
 DELIVERY 2.5" DAIRY TUBE

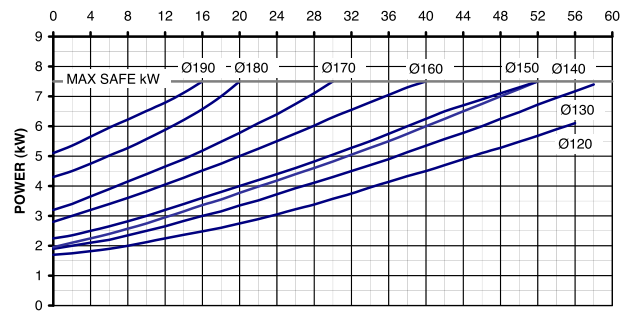
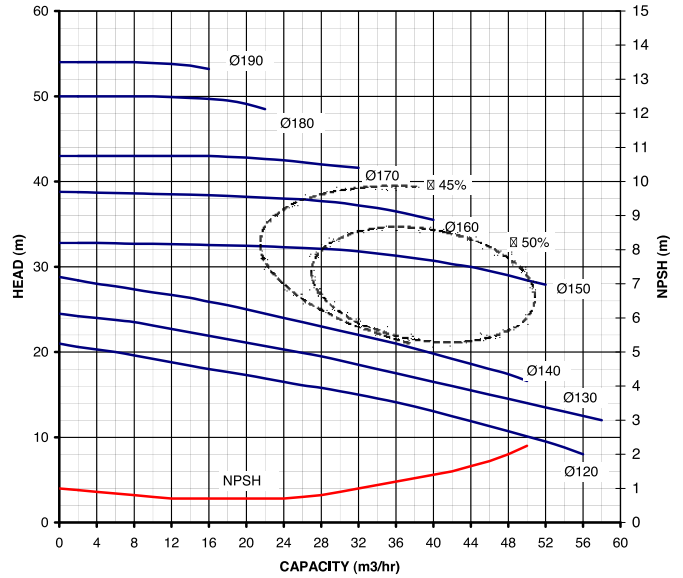
IMPELLER DIA MAX.250mm
 MIN. 170mm



PLEASE NOTE: * TEST DATA REFERS TO WATER AT 20°C
 * REMEMBER TO ALLOW A SAFETY MARGIN

MOTOR 7.5 kW, 2900 RPM, 50 Hz
 SUCTION 3" DAIRY TUBE
 DELIVERY 2.5" DAIRY TUBE

IMPELLER DIA MAX.190mm
 MIN. 120mm



PLEASE NOTE: * TEST DATA REFERS TO WATER AT 20°C
 * REMEMBER TO ALLOW A SAFETY MARGIN



Contact Us



Johannesburg:

79 St Georges Street, Newlands
PO Box 58070, Newville, 2114
Phone: + 27 (0)11 477-4923
Fax: + 27 (0)11 477-8062
e-mail: jhb@guth.co.za

Cape Town:

2 Platinum Rd, Marconi Industria, Montague Gardens
PO Box 1486, Milnerton, 7435
Phone: + 27 (0)21 555-8300
Fax: + 27 (0)21 552-2228
e-mail: Cape@guth.co.za

Port Elizabeth:

Unit 24, Willow Road Business Park, 33 Willow Road, Fairview
PO Box 70496, The Bridge PO, Port Elizabeth, 6032
Phone: + 27 (0)41 367 2431
Fax: + 27 (0)41 367 5152
email: pe@guth.co.za

Pinetown:

Unit 3 Pastel Park, 50 Wareing Road
PO Box 8, Pinetown, 3600
Phone: + 27 (0)31 709-5444
Fax: + 27 (0)31 709-8333
e-mail: pinetown@guth.co.za



guth
SOUTH AFRICA